

AUDAX TOP 16 ERP SINGLE PHASE HYDRONIC HEAT PUMP

MANUFACTURED BY:



AUDAX TOP 16 kW single phase heat pumps allow more advanced solutions in any domestic environment delivering both hydronic heating and cooling as well as domestic hot water. The new range of Immergas heat pumps are air to water heat pumps using inverter technology, ideal for stand-alone systems or combined with additional heat sources and equipment delivering hybrid systems.



**7 YEAR*
WARRANTY**



AUDAX TOP 16 ErP

- Single phase
- Compatible with DHW storage tank
- Can work in conjunction with additional heat sources
- Equipped with:
 - Electronic thermal expansion valve
 - Modulating fan and compressor
 - Low consumption modulating system pump
 - Gas/Water heat exchanger
 - Expansion vessel
 - Water flow-switch
 - 3 bar safety valve
- Supplied with remote control thermostat (4 wire), Y water filter 1", condensate drain fitting and antivibration supports
- Pre-loaded refrigerant R410A
- Buffer tanks available in 4 sizes: 25 - 200 L

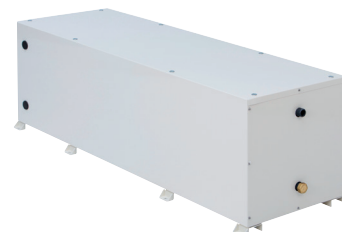


HUNT HEATING
The smart choice.

HEAT PUMP THERMOSTAT & CONTROLLER



HORIZONTAL BUFFER TANK



SHOWROOM

11 Fiveways Boulevard
Keysborough
VIC 3173

PHONE 1300 00 1800

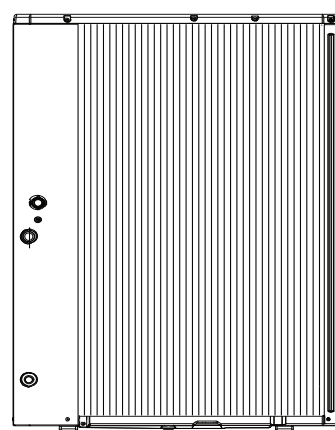
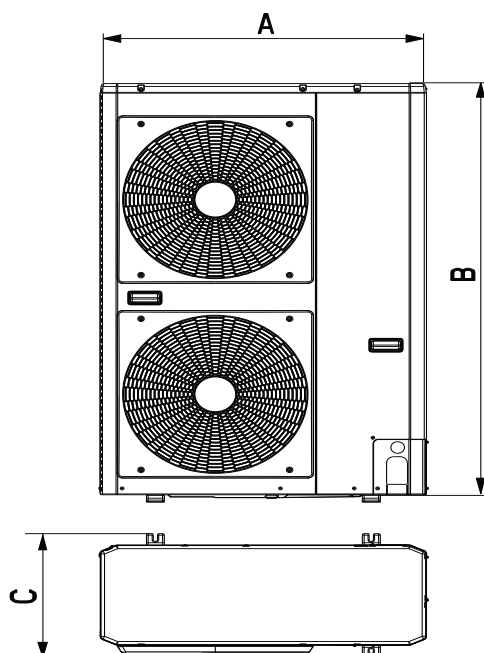
FAX +61 (0)3 9798 5133

enquiries@huntheat.com.au

www.huntheat.com.au

Technical data	Unit of measurement	AUDAX TOP 16 ErP
Heating Output*	kW	15.00
Coefficient of Performance (heating)*	CoP	4.20
Cooling Output*	kW	16.00
Energy Efficiency Ratio (cooling)*	EER	3.81
Max. noise level	dB	68
Outdoor temperature operating range (heating)	°C	-20 / 30
Outdoor temperature operating range (cooling)	°C	0 / 46
Power supply		Single Phase
Max. power absorbed	kW	6.5
Max. current absorbed	A	11.1
Refrigerant Gas		R410A
Refrigerant gas volume	kg	3.385
Max. water delivery temperature	°C	60
Water content	l	2.5
Expansion vessel volume	l	3
Hydraulic circuit maximum pressure	kPa	300
System flow and return connections	inch	1
Weight	kg	116

* Buffer tank dimensions and specifications available upon request



AUDAX TOP 12kW / 16kW	
A	908 mm
B	1363 mm
C	400 mm

NOTE: Remote control - 4 wire

* Please contact Hunt Heating for more information.

+ Measuring conditions: Heating mode - Water inlet temp 30°C/35°C, outdoor air temp 7°C db/6°C wb. Performance in compliance with EN 14511.

Cooling mode - Water inlet temp 23°C/18°C, outdoor air temp 35°C. Performance in compliance with EN 14511.